

Numerous applications

Renuva® is a short, in-office procedure, making it ideal for a number of small-volume fat transfer applications, such as:

Liposuction Defects

Small Soft Tissue Defects

Cellulite Dimples

ORDERING INFORMATION

ITEM CODE	DESCRIPTION
AP0001	Allograft Adipose Matrix, 1.5cc
AP0003	Allograft Adipose Matrix, 3cc

To place an order, contact MTF Biologics Customer Service at 800-433-6576.



Science Driven. Patient Focused.

125 May Street, Edison, NJ 08837 USA • (800) 946-9008 • +1 (732) 661-0202 • mtf.org



Engineered to
conveniently treat
small volume soft tissue
defects through an
in-office procedure



ALLOGRAFT ADIPOSE MATRIX





Revolutionary

Developed by MTF Biologics, Renuva® is an off-the-shelf allograft adipose matrix designed to address small aesthetic defects, such as cellulite dimples, liposuction irregularities, and loss of volume in the temples, cheeks, and hands, *without harvesting patient fat*.

Eliminating this secondary surgery means less OR time for you, and less down time and risk of post-surgical complications for your patients. And unlike synthetic fillers, like Juvéderm® and Sculptra®, Renuva allows the patient’s own cells to re-grow the injected space.

Convenient

Renuva is quick and easy to rehydrate and can be stored at room temperature for up to one year; no need to refrigerate.



Most Renuva procedures can be performed in a 10 minute in-office visit.

Juvéderm is a registered trademark of Allergan.
Sculptra is a registered trademark of Galderma.

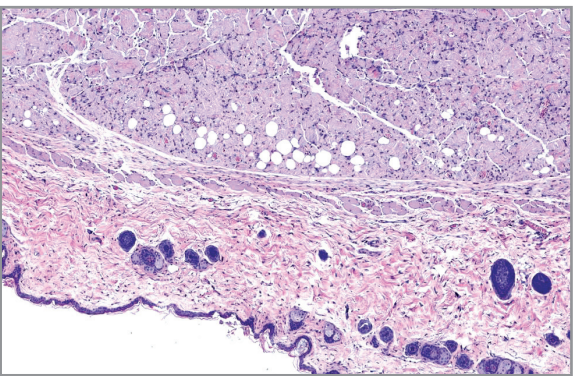
Grounded in Science

Renuva undergoes minimal processing, rendering the graft sterile per USP<71> while preserving the key growth factors needed for fat creation and survival (adipogenesis and angiogenesis).

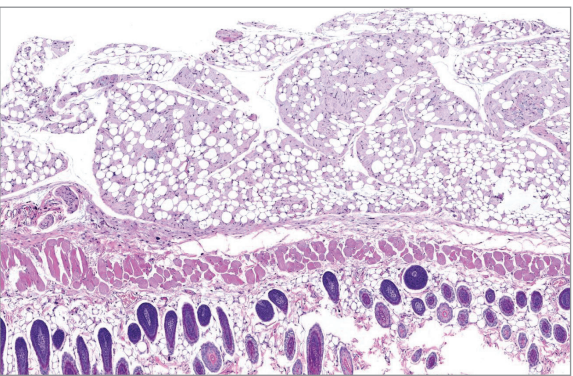
	GROWTH FACTOR¹	NATIVE HUMAN FAT	RENUVA
KEY ANGIOGENIC FACTORS	Angiopoietin-2	✓	✓
	EGF	✓	✓
	FGF-1	✓	✓
	FGF-2	✓	✓
KEY ADIPOGENIC FACTORS	VEGF	✓	✓
	Adiponectin	✓	✓
	IGF-1	✓	✓
	Leptin	✓	✓
	IL-6	✓	✓

Renuva injection after 3 and 12 weeks in an athymic mouse

Three weeks post-injection with Renuva:
Host-cell infiltration and early adipocyte formation around the periphery of the injected graft.



Twelve weeks post-injection with Renuva:
Renuva is well-infiltrated by the host and shows significant adipocyte formation across the entire injected graft.

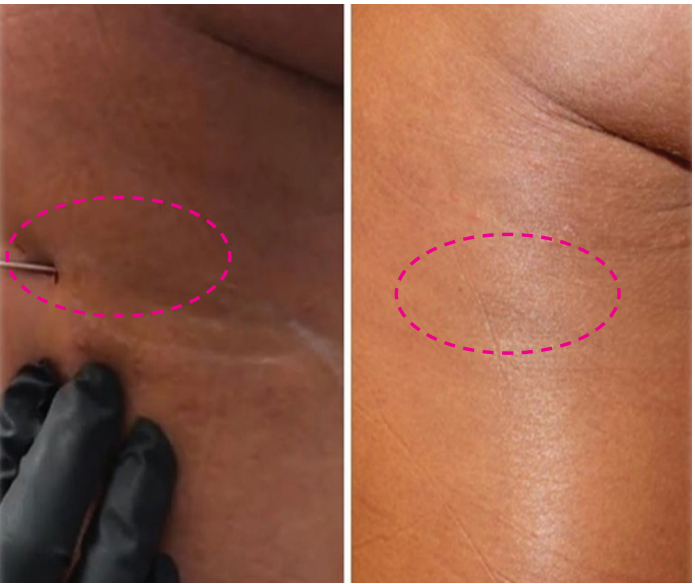


H&E staining of Renuva injection in an athymic mouse.

¹ Pre-clinical assessment of an adipose-derived allograft scaffold. MTF Correspondence. 2015.

Proven Results

Below are examples of how two surgeons are using Renuva to address small aesthetic defects.



Before: Posterior Thigh Cellulite Dimple

After: 12-weeks post-injection with 1.5cc Renuva

"It is the closest feel to your own fat, without the donor site."

"There is no longer a need for autologous fat with this off-the-shelf alternative. Injection is easy, performed in clinic, and the results are long lasting. The clinical implications are infinite."

Regina Fearmonti, MD
Alon Aesthetics

"Renuva is produced from the highest quality tissue, and gives you the same effect as fat grafting without the need for liposuction."

Lisa DiFrancesco, MD
Atlanta, GA



Before: Lateral Thigh Dimple

After: 3-weeks post-injection with 3cc Renuva

To learn more about Renuva, please contact your sales representative or visit **myrenuva.com**.